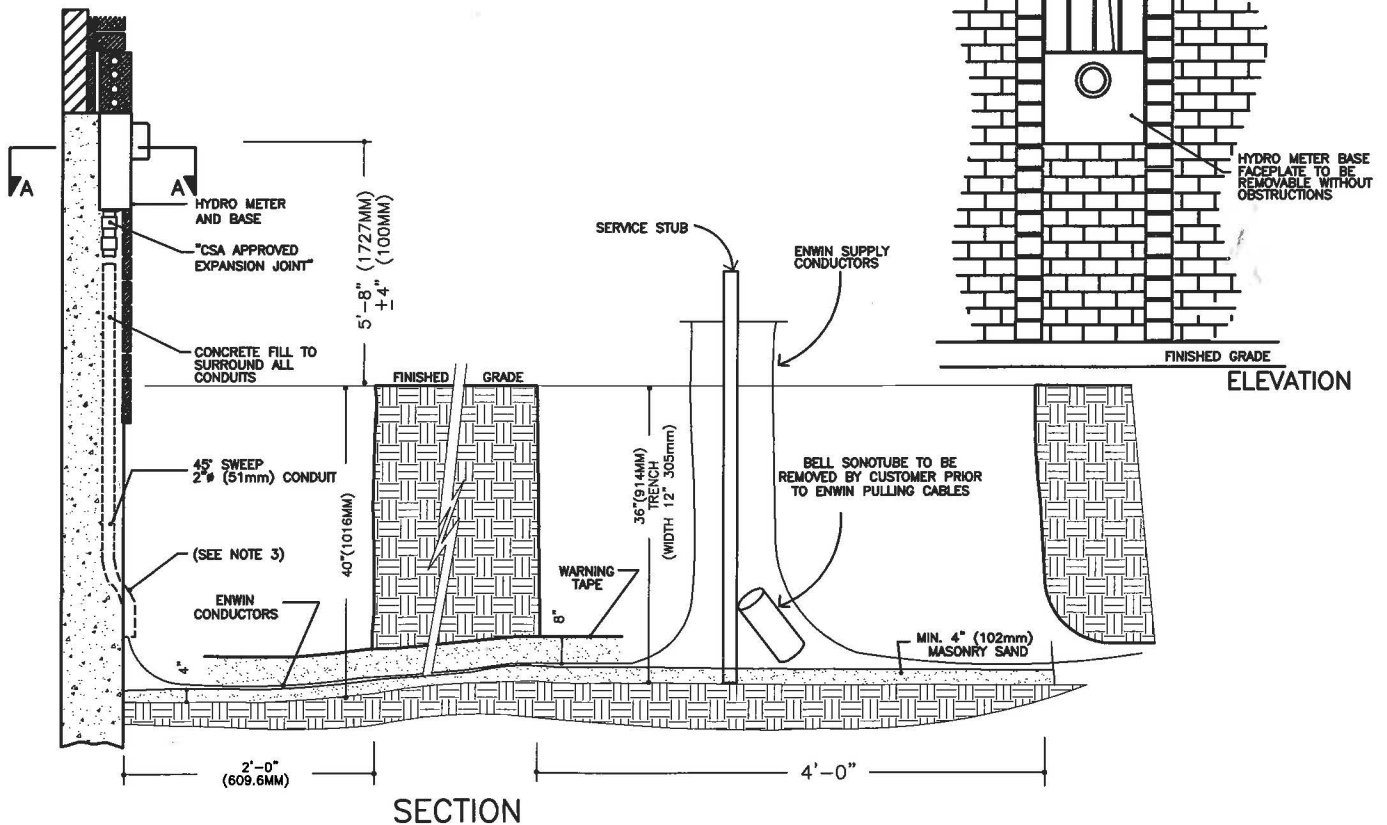


NOTES:

- EXCAVATIONS BY OWNER TO ENABLE INSTALLATION OF SERVICE CABLE BY ENWIN.
- IN ADDITION TO THE 4" (100mm) OF BASE SAND, THE CUSTOMER IS TO PROVIDE ADDITIONAL MASONRY SAND ON SITE FOR 8" (203mm) BACKFILL OF CABLE. SAND TO BE PLACED IN PILES (1 YARD) ALONG TRENCH AT SERVICE STUB EXCAVATION AT WALL AND MINIMUM OF 1 POINT ALONG TRENCH OR MAX 15' OR 5m PILE SPACING.
- PROVIDE DUCT EXTENSION CLEAR OF CONCRETE LIP WITH STRAIGHT PIPE FOR SERVICE ENTRANCE.
- FOLLOWING INSTALLATION, THE CUSTOMER SHALL ASSUME RESPONSIBILITY FOR ANY FUTURE REPAIRS TO HYDRO METER BASE OR CONDUITS.
- STUB SHALL BE ENTIRELY REMOVED DURING EXCAVATION WITHOUT DAMAGING CONDUCTORS. EXCAVATION OF BELL SONOTUBE IS ALSO RESPONSIBILITY OF CUSTOMER.

WEATHERPROOF CAULKING BETWEEN HYDRO METER BASE AND FACE BRICK



TITLE SERVICE GUIDE – RESIDENTIAL UNDERGROUND SERVICE ENTRANCE w/ DIRECT BURIED CABLE, METER MOUNTED IN FACE BRICK

REVISION
08-JAN-18

APPROVED
M. Dent



STD. DWG. NO. SG-22
SERVICE GUIDE FIGURE SG-22
CAD FILE NAME SG-22